

CERTIFICATE OF LOCATION OF GOVERNMENT CORNER

County of Anoka

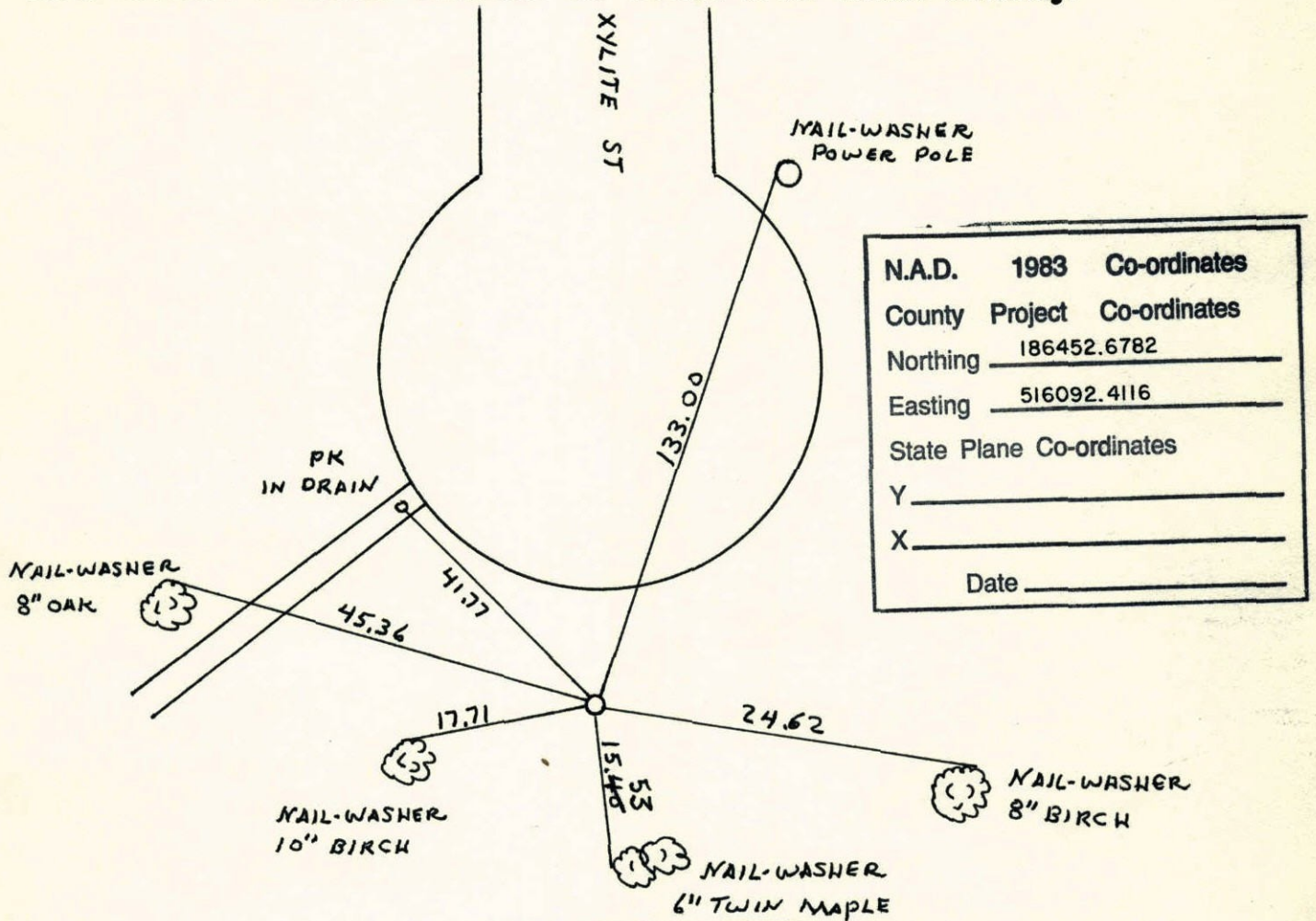
State of Minnesota

W.C. ON WEST Corner of Sec. 10 Township 32 Range 23
LINE OF SW 1/4

I hereby certify that on the 23RD day of MARCH, 1961, I found the described corner which was evidenced by AREA RESURVEY

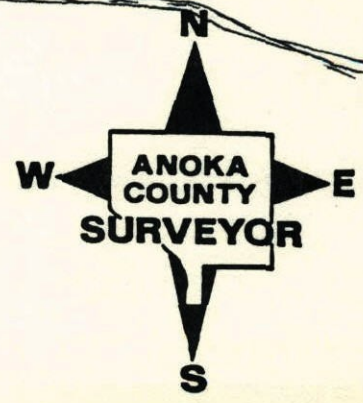
and I further certify that to perpetuate the location of said corner, I did, at the exact location thereof, place a permanent marker consisting of CAST IRON MONUMENT

which reference or witness monuments are located in the manner following:



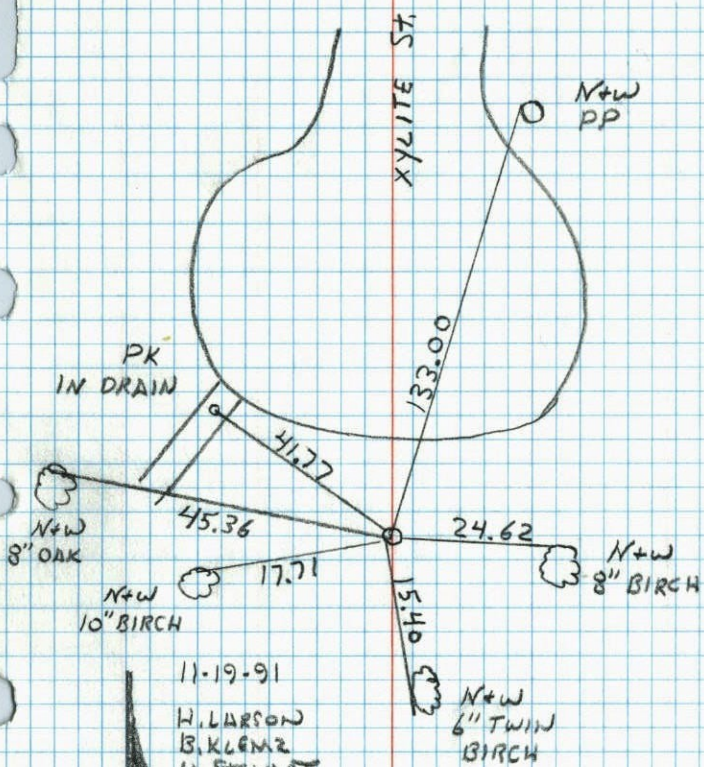
LAKE NETTA

Revised date	Revised date	Revised date
12-8-81		
6-2-84		
11-19-91		
8-1-96		

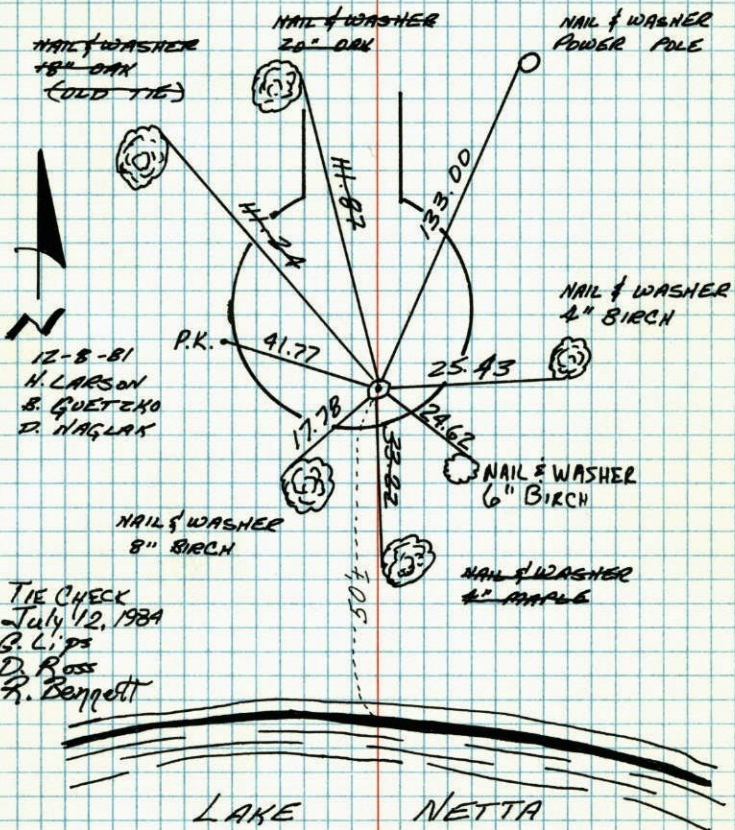


WC ON W LINE OF SW¹/₄ SEC 10 T32 R23

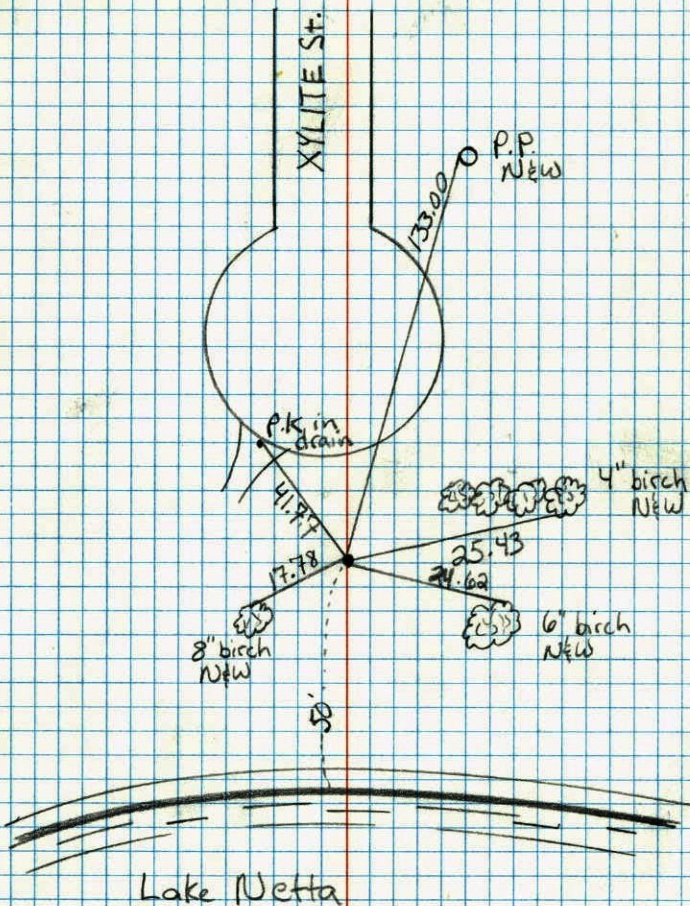
RETIED CAST IRON



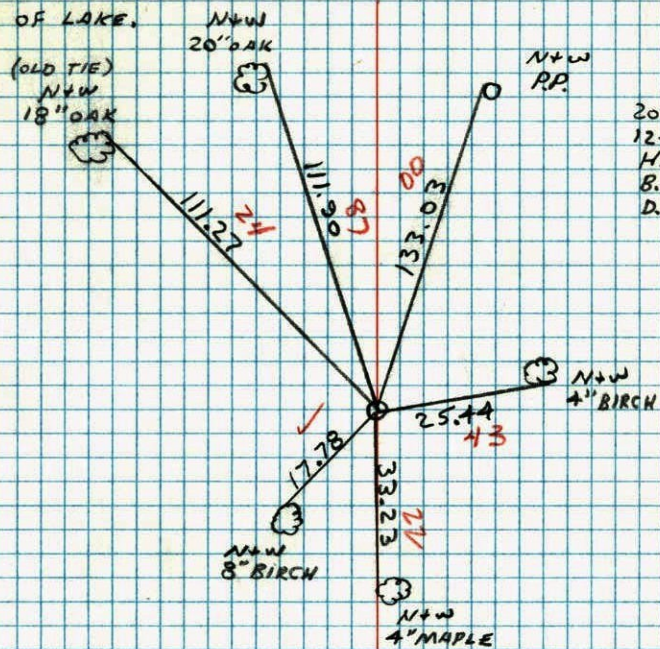
11-19-91

H. LARSON
B. KLEMZ
M. STEWARTWITNESS CORNER ON WEST LINE OF
SECTION 10 - T32 - R23RETIED WITNESS CORNER ON NORTH LINE OF LAKE
NETTA. CAST IRON FLOREN AND 50' N NORTH OF
LAKE.TIE CHECK
July 12, 1984
G. L. PS
D. ROSS
R. BennettLAKE
NETTATEMPERATURE CORRECTED
AND HORIZONTALLY.
TAPED MEASUREMENTSROLAND W. ANDERSON
COUNTY SURVEYOR
ANOKA COUNTY, MINNESOTA

38
W.C. West line of Section 10 T32-R23



39
W.C. ON WEST LINE OF SEC. 10 T32 R23
RETIED W.C. ON NORTH SIDE OF
LAKE NETTA, EAST FROM FLUSH AND 50' NORTH
OF LAKE.



M.C. on W. Line

See 10-32-23

Cast Iron Monument up 0.05'
Found Broken off Cast Iron Mon. Replaced With New Cast
Iron Mon. Down 0.2' ±

March 23, 1961

Freeman
Anderson

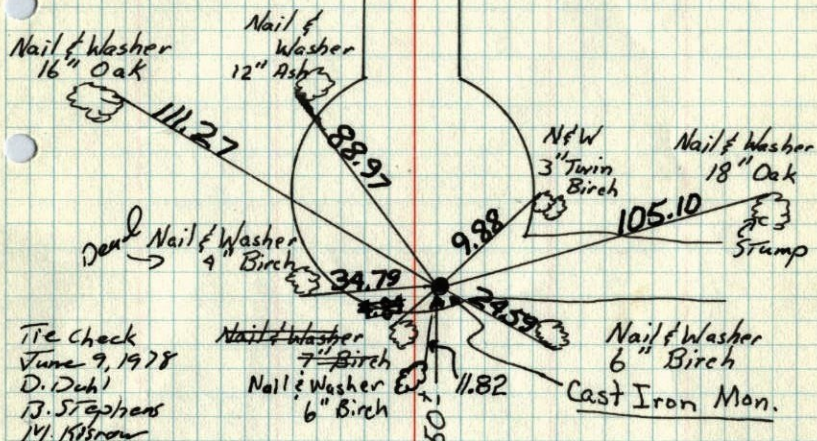
June 10, 1975

D. Dahl
B.S.
G.A.

Tie Check

June 9, 1971

R. Brien
J. Boettcher



SEE NEW
TIES
HL.

TEMPERATURE CORRECTED
AND HORIZONTALLY
TAPED MEASUREMENTS

ROLAND W. ANDERSON
COUNTY SURVEYOR
ANOKA COUNTY, MINNESOTA